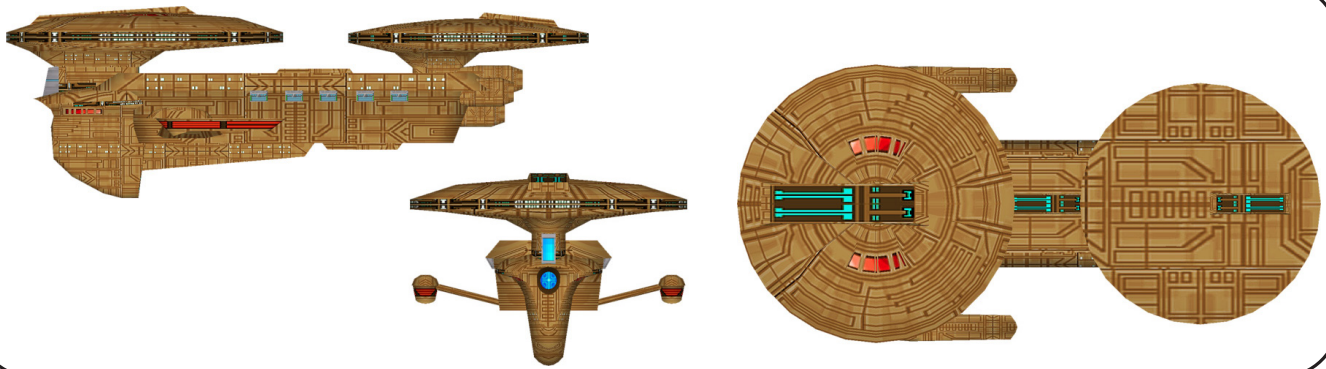


BARAL CLASS XI-XII HEAVY CRUISER



Construction Data:

	Mk I	Mk II	Mk III	Mk IV
<i>Model Numbers</i> —	X	XI	XI	XII
<i>Ship Class</i> —	2256	2267	2284	2289
<i>Date Entering Service</i> —	31	16	5	2
<i>Number Constructed</i> —				
Hull Data:				
<i>Superstructure Points</i> —	36	38	34	48
<i>Damage Chart</i> —	C	C	C	C
<i>Size:</i>				
Length —	279.0 m	279.0 m	279.0 m	279.0 m
Width —	132.0 m	132.0 m	132.0 m	132.0 m
Height —	92.0 m	92.0 m	92.0 m	92.0 m
Displacement —	143,518 mt	150,954 mt	179,867 mt	203,935 mt
<i>Cargo:</i>				
Cargo Units —	470 SCU	470 SCU	470 SCU	470 SCU
Cargo Capacity —	23,500 mt	23,500 mt	23,500 mt	23,500 mt
Landing Capacity —	None	None	None	None
Equipment Data:				
<i>Control Computer Type</i> —	TCS-6	TCS-8	TCS-10	TCS-10
<i>Transporters:</i>				
standard 6-person —	4	4	4	4
emergency 18-person —	6	6	6	6
cargo —	3	3	3	3
Other Data:				
<i>Crew</i> —	488	488	488	488
<i>Passengers</i> —	30	30	30	30
<i>Shuttlecraft</i> —	6	6	6	6
Engines And Power Data:				
<i>Total Power Units Available</i> —	32	52	66	66
<i>Movement Point Ratio</i> —	3/1	4/1	4/1	5/1
<i>Warp Engine Type</i> —	TEWC-1	TEWC-2	TEWD-1	TEWD-1
Number —	2	2	2	2
Power Units Available —	12 ea.	17 ea.	24 ea.	24 ea.
Stress Chart —	N/O	N/P	G/H	G/H
Max Safe Cruising Speed —	Warp 5	Warp 5	Warp 6	Warp 5
Emergency Speed —	Warp 7	Warp 7	Warp 7	Warp 7
<i>Impulse Engine Type</i> —	TEIC-2	TEIC-4	TEIC-4	TEIC-4
Power Units Available —	8	18	18	18
Weapons And Firing Data:				
<i>Beam Weapon Type</i> —	TLH-4	TLH-5	TLH-7	TLH-7
Number —	4	4	4	4
Firing Arcs —	2 f, 1 p, 1 s	2 f, 1 p, 1 s	2 f, 1 p, 1 s	2 f, 1 p, 1 s
Firing Chart —	N	Q	W	W
Maximum Power —	4	5	6	6
Damage Modifiers —				
+3	(1-4)	(1-4)	(1-6)	(1-6)
+2	(5-8)	(5-9)	(7-13)	(7-13)
+1	(9-13)	(10-14)	(14-20)	(14-20)
<i>Beam Weapon Type</i> —	TLL-2	TLL-4	TLH-4	TLH-6
Number —	4	4	4	4
Firing Arcs —	1 p/a, 2 a, 1 s/a	1 p/a, 2 a, 1 s/a	1 p/a, 2 a, 1 s/a	1 p/a, 2 a, 1 s/a
Firing Chart —	F	B	N	S
Maximum Power —	5	8	4	8
Damage Modifiers —				
+3	(-)	(-)	(1-4)	(1-5)
+2	(1-4)	(1-7)	(5-8)	(6-10)
+1	(5-6)	(8-9)	(9-13)	(11-16)
<i>Missile Weapon Type</i> —	TPT-1	TEP-1	TEP-2	TPT-6
Number —	2	4	2	2
Firing Arcs —	1 f, 1 a	2 f, 2 a	1 f, 1 a	1 f, 1 a
Firing Chart —	D	T	R	O
Power To Arm —	3	1	1	4
Damage —	8	6	14	24
Shield Data:				
<i>Deflector Shield Type</i> —	TPSB	TPSE	TPSG	TPSG
Shield Point Ratio —	1/2	1/2	1/2	1/2
Maximum Shield Power —	14	14	19	18
Combat Efficiency:				
<i>D</i> —	102.5	111.3	122.6	132.6
<i>WDF</i> —	20.8	37.6	53	75.2

Notes:

29 Mk IVs are in reserve fleets. 4 Mk Is and 1 Mk II have been destroyed. 1 Mk I has been captured by the Cardassians. 1 Mk IV has been captured by the Talarians. 1 Mk I and 1 Mk II are listed as missing. 1 Mk I, 4 Mk IIs and 1 Mk III have been scrapped. 10 Mk Is were sold.

