



Zakor Class VIII Destroyer



Type-1, Type-3 & Type-6

Construction Data:

<i>Model Numbers —</i>	Type-1	Type-2	Type-3	Type 4	Type 5	Type-6
<i>Ship Class —</i>	VIII	VIII	VIII	VIII	VIII	VIII
<i>Date Entering Service —</i>	2292	2295	2335	2347	2355	2360
<i>Number Constructed —</i>	124	85	Refit	40	Refit	Refit

Hull Data:

<i>Superstructure Points —</i>	32	33	32	34	33	32
<i>Damage Chart —</i>	A	A	A	A	A	A
<i>Size:</i>						
Length —	229.4 m	229.4 m	229.4 m	229.9 m	229.4 m	229.4 m
Width —	134.9 m	129.9 m	134.9 m	142.1 m	129.9 m	134.9 m
Height —	24.6 m	67.2 m	24.6 m	74.4 m	67.2 m	24.6 m
Displacement —	118,502 mt	119,718 mt	117,355 mt	119,508 mt	119,715 mt	116,468 mt
<i>Cargo:</i>						
Cargo Units —	233 SCU	238 SCU	233 SCU	206 SCU	238 SCU	233 SCU
Cargo Capacity —	11,650 mt	11,900 mt	11,650 mt	10,300 mt	11,900 mt	11,650 mt
Landing Capacity —	None	None	None	None	None	None

Equipment Data:

<i>Control Computer Type —</i>	CO-6	CO-6	CO-6	CI-2b	CI-2a	CI-2b
<i>Transporters:</i>						
standard 3-person —	3	2	3	2	2	3
cargo/emergency —	4	3	4	2	3	4

Other Data:

<i>Crew —</i>	218	214	218	220	214	218
<i>Passengers —</i>	20	40	20	0	40	20
<i>Shuttlecraft —</i>	2	2	2	4	2	2

Engines And Power Data:

<i>Total Power Units Available —</i>	37	45	54	64	51	60
<i>Movement Point Ratio —</i>	3/1	4/1	3/1	4/1	4/1	3/1
<i>Warp Engine Type —</i>	CWG-1	CWG-2	CWI-1	CWI-2	CWG-2	CWI-1
Number —	1	1	1	1	1	1
Power Units Available —	23	37	34	38	37	34
Stress Chart —	E/F	E/F	J/K	J/K	E/F	J/K
Maximum Safe Cruising Speed —	Warp 6	Warp 6	Warp 6	Warp 6	Warp 6	Warp 6
Emergency Speed —	Warp 8	Warp 8	Warp 8	Warp 8	Warp 8	Warp 8
<i>Impulse Engine Type —</i>	CIC-2 (x2)	CIC-1 (x2)	CID-1 (x2)	CID-2 (x2)	CIC-2 (x2)	CID-2 (x2)
Power Units Available —	7 ea.	4 ea.	10 ea.	13 ea.	7 ea.	13 ea.

Weapons And Firing Data:

<i>Beam Weapon Type —</i>	CD-6b	CD-6b	CD-11	CD-14	CD-13	CD-11
Number —	4	4	4	4	4	4
Firing Arcs —	2 f/p/a, 2 f/s/a	2 f/p, 2 f/s	2 f/p/a, 2 f/s/a	2 p/f/s	2 f/p, 2 f/s	2 f/p/a, 2 f/s/a
Firing Chart —	U	U	Y	W	Y	Y
Maximum Power —	9	9	11	17	8	11
Damage Modifiers —						
+3	(1-6)	(1-6)	(1-2)	(1-14)	(1-8)	(1-2)
+2	(7-15)	(7-15)	(3-9)	(15-18)	(9-19)	(3-9)
+1	(18-20)	(18-20)	(10-16)	(19-20)	(20-21)	(10-16)
<i>Beam Weapon Type —</i>	CSD-4	CSD-5	CSD-5	CSD-6	CSD-6	CSD-5
Number —	2	2	2	2	2	2
Firing Arcs —	2 f	2 f	2 f	2 f	2 f	2 f
Firing Chart —	N	X	X	T	T	X
Maximum Power —	20	16	16	26	26	16
Damage Modifiers —						
+3	(-)	(1-8)	(1-8)	(1-5)	(1-5)	(1-8)
+2	(1-5)	(9-14)	(9-14)	(6-10)	(6-10)	(9-14)
+1	(6-13)	(15-22)	(15-22)	(11-18)	(11-18)	(15-22)
<i>Missile Weapon Type —</i>	CP-6	CP-6	CP-8	CP-11	CP-12	CP-13
Number —	1	1	1	1	1	1
Firing Arcs —	1 f	1 f	1 f	1 f	1 f	1 f
Firing Chart —	R	R	S	R	U	S
Power To Arm —	1	1	1	1	1	1
Damage —	26	26	28	38	25	30

Shield Data:

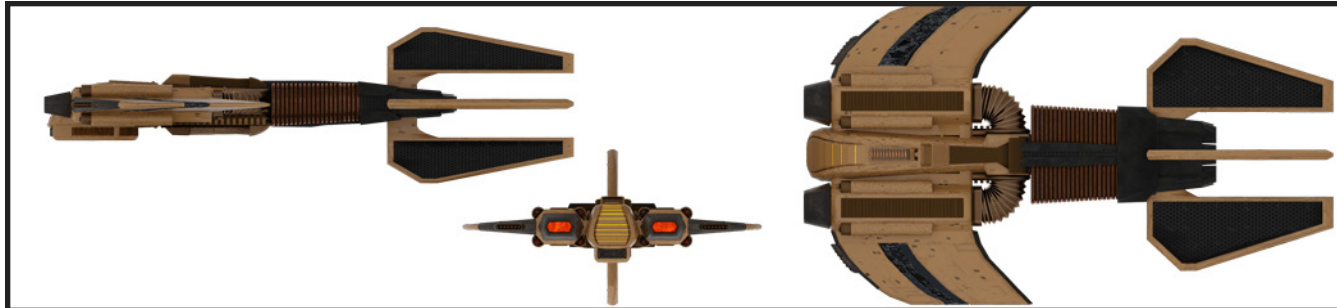
<i>Deflector Shield Type —</i>	CSI	CSI	CSP	CST	CSS	CST
Shield Point Ratio —	1/3	1/3	1/3	1/3	1/4	1/3
Maximum Shield Power —	12	12	30	39	31	39

Combat Efficiency:

<i>D —</i>	114.8	111.7	162.8	171.6	163.2	186.8
<i>WDF —</i>	66.6	74.0	88.9	89.8	88.1	90.1



Zakor Class VIII Destroyer



Type-2 & Type-5



Type-4

NOTES:

Known Sphere Of Operation: Union-wide use

Data Reliability: B for Type-1, Type-2, Type-3 & Type-6, C for Type-5, D for Type-4

Major Data Source: Cardassian Sector Intelligence

The *Zakon* was one of the most unusual fleet designs that was seen in several variants over the years. The standard combat destroyer models were the Type-1, Type-3 and eventually the Type-6. These ships proved effective as light to medium destroyers and escorts in conflict zones and deep space patrols. Known to Starfleet as the *Zarkor-S*, this standardized version remains in active service, although in limited numbers. Of the 124 Type-1s built, 30 are active in Type-6 configuration, with 10 Type-3s and 6 Type-6s in reserve fleet status. 4 Type-1s, 2 Type-3s and 18 Type-6s have been destroyed. 3 Type-6s have been captured. 1 Type-3 and 2 Type-6 are listed as missing. 4 Type-1s, 3 Type-3s and 15 Type-6s have been scrapped. 10 Type-1s and 17 Type-6 have been disarmed and sold to various entities.

The Type-2 and Type-5 models were specially modified to provide additional sensor emplacements and designed to operate in a more stealthy mode. While not as maneuverable as earlier designs, the Type-2 and later Type-5 did have better targeting systems that gave the models a moderate edge over their predecessors. Later analysis of these models also showed that their designs incorporated far more re-routing sub-systems as well as additional crew protection in addition to heavier weapons. While these models proved only moderately more efficient during combat, their ability to protect their crew was unusual for a Cardassian design. The Type-2 and Type-5 were known as the *Zakon-C*, with 85 of this variant known to have been built. 26 Type-5s, converted from Type-2s are still in active service. 20 Type-5s are in reserve fleets. 2 Type-2s and 15 Type-5s have been destroyed. 1 Type-5 was captured by Klingon forces. 1 Type-2 and 1 Type-5 are listed as missing. 3 Type-2s and 16 Type-5s have been scrapped.

The most mysterious variant of the *Zakon*, known to Starfleet as the *Zakon-O*, is an Obsidian Order variant that is apparently designed to operate deep within enemy territory gathering data and evaluating strengths and weaknesses of potential enemies. This variant is notable from its counterparts due to its sensor-absorbent dark coating and unusual warp signature. Scanned only a handful of times, much of the data concerning this model is from Klingon encounters with these ships. They have sufficient firepower to be dangerous, even to larger vessels. Only 40 of these ships are known to have been commissioned. Unconfirmed reports indicate that at least 25 to 30 of these vessels are still in service. 2 are known to have been destroyed, 6 are listed as missing, although it is possible any of these missing vessels are still on unreported missions. 3 are known to have been scrapped.