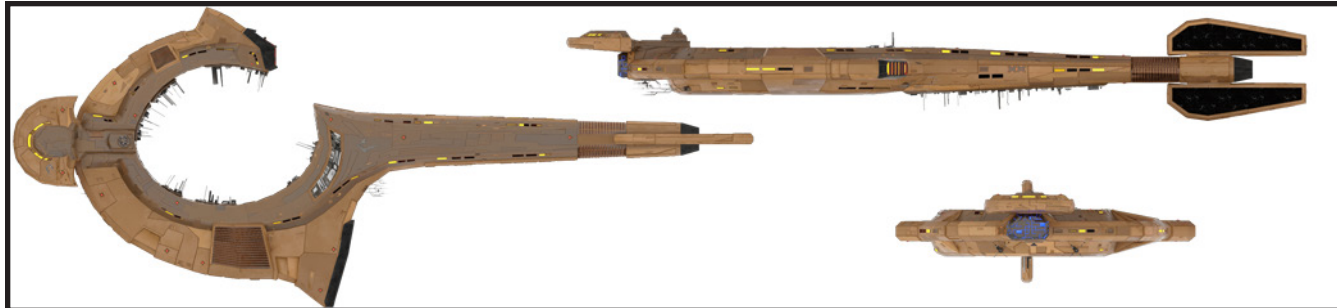




Kodahn Class IX Research Cruiser



Construction Data:

Model Numbers —	Type-1	Type-2
Ship Class —	IX	IX
Date Entering Service —	2294	2340
Number Constructed —	107	Refit

Hull Data:

Superstructure Points —	32	32
Damage Chart —	B	B
Size:		
Length —	220.8 m	220.8 m
Width —	89.7 m	89.7 m
Height —	31.5 m	31.5 m
Displacement —	121,272 mt	120,071 mt

Cargo:

Cargo Units —	338 SCU	338 SCU
Cargo Capacity —	16,900 mt	16,900 mt
Landing Capacity —	None	None

Equipment Data:

Control Computer Type —	CO-6a	CO-6a
Transporters:		
standard 3-person —	3	3
cargo/emergency —	4	4

Other Data:

Crew —	224	224
Passengers —	30	30
Shuttlecraft —	6	6

Engines And Power Data:

Total Power Units Available —	59	59
Movement Point Ratio —	4/1	4/1
Warp Engine Type —	CWG-2	CWG-2
Number —	1	1
Power Units Available —	37	37
Stress Chart —	E/F	E/F
Maximum Safe Cruising Speed —	Warp 6	Warp 6
Emergency Speed —	Warp 8	Warp 8
Impulse Engine Type —	CIF-1	CIF-1
Power Units Available —	22	22

Weapons And Firing Data:

Beam Weapon Type —	CD-6	CD-13
Number —	8	8
Firing Arcs —	2 f/p, 2 f, 2 f/s, 1 p/a, 1 s/a	2 f/p, 2 f, 2 f/s, 1 p/a, 1 s/a
Firing Chart —	T	Y
Maximum Power —	8	8
Damage Modifiers —		
+3	(1-5)	(1-8)
+2	(6-10)	(9-19)
+1	(11-18)	(20-21)
Beam Weapon Type —	CSD-3	CSD-3
Number —	2	2
Firing Arcs —	1 f, 1 a	1 f, 1 a
Firing Chart —	J	J
Maximum Power —	13	13
Damage Modifiers —		
+3	(-)	(-)
+2	(-)	(-)
+1	(1-10)	(1-10)
Missile Weapon Type —	CP-6	CP-8
Number —	2	2
Firing Arcs —	1 f, 1 a	1 f, 1 a
Firing Chart —	R	S
Power To Arm —	1	1
Damage —	26	28

Shield Data:

Deflector Shield Type —	CSM	CSP
Shield Point Ratio —	1/2	1/3
Maximum Shield Power —	26	30

Combat Efficiency:

D —	124.8	150.8
WDF —	93.2	116.6

NOTES:

Known Sphere Of Operation: Frontier zones

Data Reliability: D

Major Data Source: Cardassian Sector Intelligence

The *Kodahn* was an unusual but effective attempt to produce an asymmetrical and slightly smaller version of the *Khadon* class. With its single set of warp coils off-set from its field stabilizers, the *Kodahn* does present an unusual warp signature. However, the vessels ability to conduct research and exploration assignments are equal to its larger cousin, making the *Kodahn* a more economical design overall.

Of the 107 built, 40 Type-2s are in active service, with 40 in reserve fleets. 3 Type-1s and 9 Type-2s have been destroyed. 1 Type-2 has been captured. 1 Type-1 and 2 Type-2s are listed as missing. 1 Type-1 and 6 Type-2s have been scrapped. 4 Type-2s have been disarmed and sold to civilian concerns.