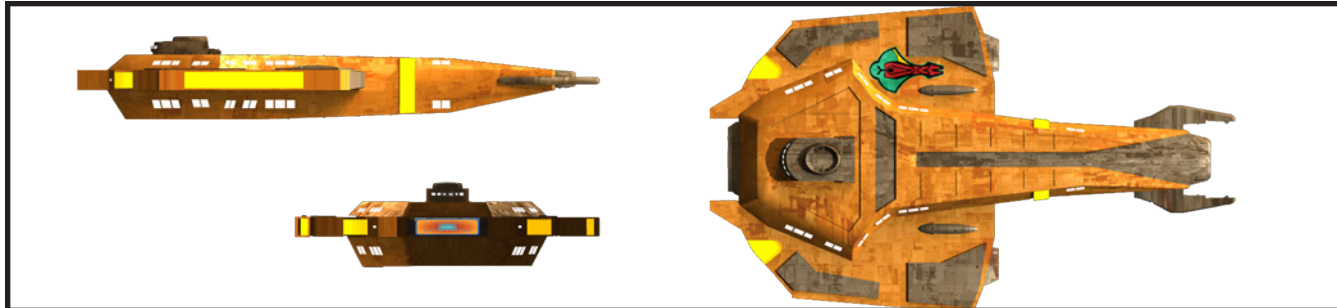




Damar (II) Class III Corvette



Construction Data:

Model Numbers —	Type-1
Ship Class —	III
Date Entering Service —	2380
Number Constructed —	226

Hull Data:

Superstructure Points —	10
Damage Chart —	B
Size:	
Length —	41.1 m
Width —	24.9 m
Height —	6.8 m
Displacement —	23,347 mt

Cargo:

Cargo Units —	15 SCU
Cargo Capacity —	750 mt
Landing Capacity —	Yes

Equipment Data:

Control Computer Type —	CI-1
Transporters:	
standard 3-person —	1
cargo/emergency —	1

Other Data:

Crew —	43
Passengers —	2

Engines And Power Data:

Total Power Units Available —	18
Movement Point Ratio —	3/1
Warp Engine Type —	CWA-2
Number —	2
Power Units Available —	7 ea.
Stress Chart —	F/H
Maximum Safe Cruising Speed —	Warp 5
Emergency Speed —	Warp 7
Impulse Engine Type —	CIA-4
Power Units Available —	4

Weapons And Firing Data:

Beam Weapon Type —	CD-4
Number —	2
Firing Arcs —	1 f/p, 1 f/s
Firing Chart —	N
Maximum Power —	6
Damage Modifiers —	
+3	(-)
+2	(1-5)
+1	(6-13)
Beam Weapon Type —	CSD-3
Number —	1
Firing Arcs —	1 a
Firing Chart —	J
Maximum Power —	13
Damage Modifiers —	
+3	(-)
+2	(-)
+1	(1-10)
Missile Weapon Type —	CP-8
Number —	1
Firing Arcs —	1 f
Firing Chart —	S
Power To Arm —	1
Damage —	28

Shield Data:

Deflector Shield Type —	CSD
Shield Point Ratio —	1/2
Maximum Shield Power —	7

Combat Efficiency:

D —	41.3
WDF —	30.3

NOTES:

Known Sphere Of Operation: Union interior

Data Reliability: E

Major Data Source: Cardassian Sector Intelligence

Another design name in honor of Cardassian resistance leader Damar, these small patrol vessels are used extensively throughout Cardassian space, patrolling near colonies, outposts and established planetary systems. Usually assigned in groups of 4 to 6 vessels, these ships can also be used as interdiction and customs enforcement vessels. Production has slowed significantly as of late, with an average commissioning of 5 vessels per year. A Type-2 version is rumored to be under consideration, however this has not, as of yet, been confirmed.

Currently, 168 *Damar (II)* class vessels remain in active service, with 50 of the oldest hulls in reserve fleets. 4 have been destroyed, 2 are listed as missing and 2 have been scrapped.