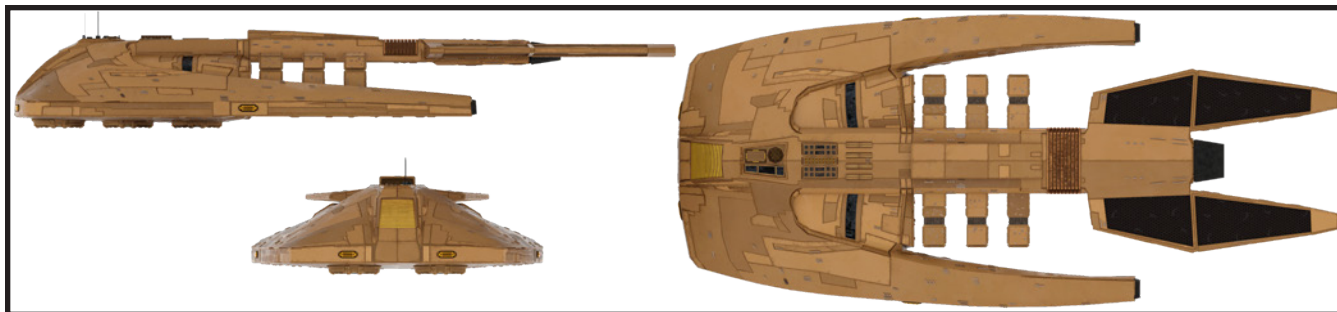




Belcanor (II) Class VIII Transport



Construction Data:

Model Numbers —	Type-1
Ship Class —	VIII
Date Entering Service —	2346
Number Constructed —	252

Hull Data:

Superstructure Points —	18
Damage Chart —	A
Size:	
Length —	43.1 m
Width —	21.7 m
Height —	7.7 m
Displacement —	119,427 mt
Cargo:	
Cargo Units —	5,653 SCU
Cargo Capacity —	282,650 mt
Landing Capacity —	None

Equipment Data:

Control Computer Type —	CI-2b
Transporters:	
standard 3-person —	3
cargo/emergency —	6

Other Data:

Crew —	126
Passengers —	20
Shuttlecraft —	6

Engines And Power Data:

Total Power Units Available —	56
Movement Point Ratio:	
unloaded —	3/1
loaded —	6/1
Warp Engine Type —	CWC-2
Number —	2
Power Units Available —	18 ea.
Stress Chart —	O/M
Maximum Safe Cruising Speed:	
unloaded —	Warp 7
loaded —	Warp 5
Emergency Speed:	
unloaded —	Warp 8
loaded —	Warp 7
Impulse Engine Type —	CID-1 (x2)
Power Units Available —	10 ea.

Weapons And Firing Data:

Beam Weapon Type —	CD-13
Number —	4
Firing Arcs —	2 f, 1 p, 1 s
Firing Chart —	Y
Maximum Power —	8
Damage Modifiers —	
+3	(1-8)
+2	(9-19)
+1	(20-21)

Shield Data:

Deflector Shield Type —	CST
Shield Point Ratio —	1/3
Maximum Shield Power —	39

Combat Efficiency:

D —	
unloaded —	159.2
loaded —	121.7
WDF —	35.2

NOTES:

Known Sphere Of Operation: Union-wide use

Data Reliability: B

Major Data Source: Cardassian Sector Intelligence

The *Belcanor (II)*, an update to the older *Belcanor (I)*, was designed to transport its cargo both internally and in cargo pods. Variable small and medium cargo pods could be attached together and secured using the *Belcanor's* cargo grapple system. This improved efficiency and turn-around times and allowed the *Belcanor (II)* to operate with more varied cargo manifests.

The *Belcanor (II)* was produced up until the Dominion/Cardassian merger, with over 250 produced. *Belcanor (II)* was one of the main transports used along the ever-changing borders during the war, with a significant number being destroyed or damaged during that conflict. 123 Type-1s remain in active service, with 30 older hulls currently in reserve fleets. 38 were destroyed, 4 were captured, 2 are listed as missing and 45 have been scrapped. 10 were eventually sold.