

KEVAL CLASS XII BATTLESHIP

Construction Data:

<i>Model Numbers —</i>	Mk I	Mk II	Mk III
<i>Ship Class —</i>	XII	XII	XII
<i>Date Entering Service —</i>	2258	2276	2289
<i>Number Constructed —</i>	8	4	0

Hull Data:

<i>Superstructure Points —</i>	50	50	50
<i>Damage Chart —</i>	C	C	C
<i>Size:</i>			
Length —	401.0 m	401.0 m	401.0 m
Width —	266.7 m	266.7 m	266.7 m
Height —	53 mt	53 mt	53 mt
Weight —	192579	194371	198339
<i>Cargo:</i>			
Cargo Units —	817 mt	817 mt	817 mt
Cargo Capacity —	40850	40850	40850
<i>Landing Capacity —</i>	None	None	None

Equipment Data:

<i>Control Computer Type —</i>	AMC-8	AMC-10	AMC-12
<i>Transporters:</i>			
standard 6-person —	3	3	3
combat 22-person —	4	4	4
emergency 18-person —	4	4	4
cargo —	5	5	5

Other Data:

<i>Crew —</i>	395	402	408
<i>Troops —</i>	150	150	150
<i>Passengers —</i>	15	15	15
<i>Shuttlecraft —</i>	8	8	8

Engines And Power Data:

<i>Total Power Units Available —</i>	30	47	48
<i>Movement Point Ratio —</i>	4/1	4/1	4/1
<i>Warp Engine Type —</i>	AWD-1	AWD-2	AWD-2
Number —	2	2	2
Power Units Available —	10 ea.	16 ea.	16 ea.
Stress Chart —	K/F	L/F	L/F
Max Safe Cruising Speed —	Warp 6	Warp 6	Warp 6
Emergency Speed —	Warp 8	Warp 8	Warp 8
<i>Impulse Engine Type —</i>	AID-2	AIC-2	AIE-2
Power Units Available —	10	15	16

Weapons And Firing Data:

<i>Beam Weapon Type —</i>	AH-6	AH-6	AH-7
Number —	8	8	8
Firing Arcs —	2 f/p, 2 f, 2 f/s, 2 a	2 f/p, 2 f, 2 f/s, 2 a	2 f/p, 2 f, 2 f/s, 2 a
Firing Chart —	M	M	Y
Maximum Power —	7	7	5
<i>Damage Modifiers —</i>			
+3	(-)	(-)	(-)
+2	(1-10)	(1-10)	(1-12)
+1	(11-14)	(11-14)	(13-24)
<i>Beam Weapon Type —</i>	AH-4	AH-4	AH-10
Number —	8	8	8
Firing Arcs —	2 p, 2 s, 2 p/a, 2 s/a	2 p, 2 s, 2 p/a, 2 s/a	2 p, 2 s, 2 p/a, 2 s/a
Firing Chart —	J	J	T
Maximum Power —	5	5	8
<i>Damage Modifiers —</i>			
+3	(1-3)	(1-3)	(1-5)
+2	(4-8)	(4-8)	(6-12)
+1	(9-10)	(9-10)	(13-18)
<i>Missile Weapon Type —</i>	AP-3	AP-5	AP-5
Number —	6	6	6
Firing Arcs —	3 f, 3 a	3 f, 3 a	3 f, 3 a
Firing Chart —	H	S	S
Power To Arm —	1	1	1
Damage —	6	15	15

Shield Data:

<i>Deflector Shield Type —</i>	ASD	ASH	ASH
Shield Point Ratio —	1/2	1/3	1/3
Maximum Shield Power —	15	18	18

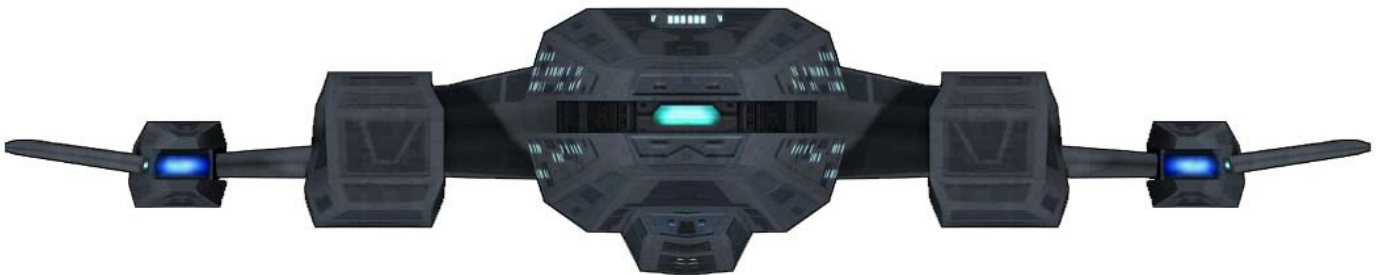
Combat Efficiency:

D —	114.5	146.5	148
WDF —	68.2	112.6	152.6

KEVAL CLASS XII BATTLESHIP

Notes:

Of the 12 Keval class ships once in service to the Andorian Imperial Guard, 8 Mk IIIs are currently in reserve fleets. 1 Mk I and 1 Mk III have been destroyed. 1 Mk II and 1 Mk III have been destroyed. The class is named after Imperial Guardsman Keval who served during the Battle of Threllvia IV.



MARR ZHIIN CLASS X CRUISER

Construction Data:

<i>Model Numbers —</i>	Mk I	Mk II	Mk III
<i>Ship Class —</i>	X	X	X
<i>Date Entering Service —</i>	2271	2275	2280
<i>Number Constructed —</i>	51	23	11

Hull Data:

<i>Superstructure Points —</i>	38	38	37
<i>Damage Chart —</i>	C	C	C
<i>Size:</i>			
Length —	271.0 m	271.0 m	271.0 m
Width —	165.0 m	165.0 m	165.0 m
Height —	28.0 m	28.0 m	28.0 m
Weight —	142,751 mt	142,331 mt	144,077 mt

Cargo:

Cargo Units —	318 SCU	318 SCU	318 SCU
Cargo Capacity —	15,900 mt	15,900 mt	15,900 mt
Landing Capacity —	None	None	None

Equipment Data:

<i>Control Computer Type —</i>	AMC-9	AMC-9	AMC-9
<i>Transporters:</i>			
standard 6-person —	2	2	2
combat 22-person —	5	5	5
emergency 18-person —	2	2	2
cargo —	3	3	3

Other Data:

<i>Crew —</i>	269	253	280
<i>Troops —</i>	100	100	100
<i>Passengers —</i>	20	20	20
<i>Shuttlecraft —</i>	8	8	8

Engines And Power Data:

<i>Total Power Units Available —</i>	54	54	62
<i>Movement Point Ratio —</i>	4/1	3/1	3/1
<i>Warp Engine Type —</i>	AWF-2	AWF-2	AWF-2
Number —	2	2	2
Power Units Available —	15 ea.	15 ea.	15 ea.
Stress Chart —	G/H	G/H	G/H
Max Safe Cruising Speed —	Warp 6	Warp 7	Warp 7
Emergency Speed —	Warp 8	Warp 8	Warp 8
<i>Impulse Engine Type —</i>	AIE-1 (x2)	AIE-1 (x2)	AIE-2 (x2)
Power Units Available —	12 ea.	12 ea.	16 ea.

Weapons And Firing Data:

<i>Beam Weapon Type —</i>	AH-7	AH-8	AH-10
Number —	6	8	8
Firing Arcs —	2 f, 2 p, 2 s	2 f, 2 p, 2 s, 2 a	2 f, 2 p, 2 s, 2 a
Firing Chart —	Y	U	T
Maximum Power —	5	4	8
Damage Modifiers —			
+3	(-)	(1-16)	(1-5)
+2	(1-12)	(17-18)	(6-12)
+1	(13-24)	(19-20)	(13-18)
<i>Missile Weapon Type —</i>	AP-4	AP-4	AP-5
Number —	3	3	3
Firing Arcs —	2 f, 1 a	2 f, 1 a	2 f, 1 a
Firing Chart —	R	R	S
Power To Arm —	1	1	1
Damage —	8	8	15

Shield Data:

<i>Deflector Shield Type —</i>	ASF	ASF	ASH
Shield Point Ratio —	1/2	1/2	1/3
Maximum Shield Power —	11	11	18

Combat Efficiency:

D —	109.3	121.3	165.4
WDF —	47.7	50.1	79.9

MARR ZHIIN CLASS X CRUISER

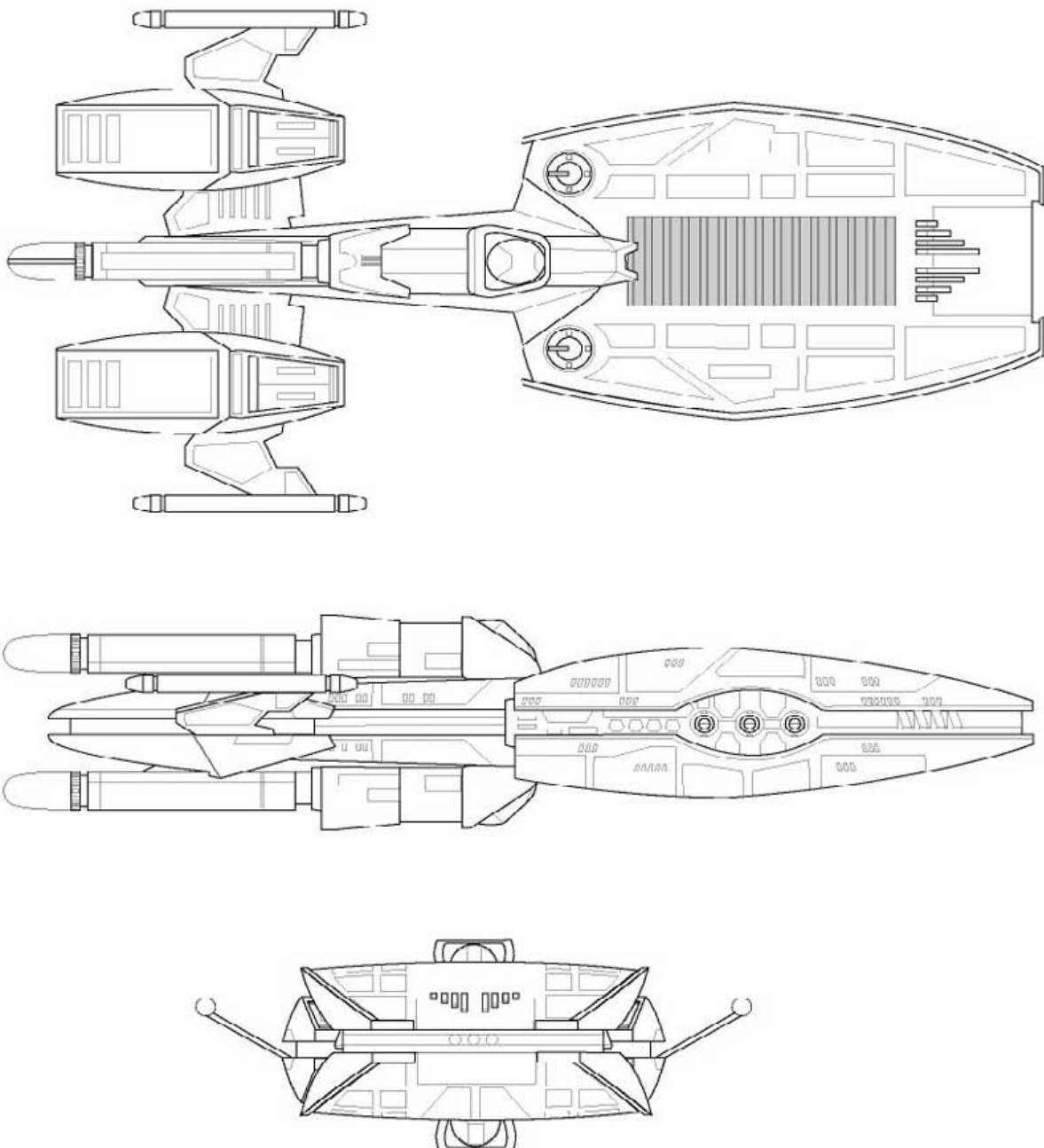
Notes:

After the Romulan War, the allied powers mutually agreed to reduce the size of their individual fleets in favor of a peacekeeping force that became Starfleet. Andoria maintained a small contingent of armed vessels for system security and several types of scientific ships, most of them retrofitted vessels left over from the war.

The incident that occurred at the Babel Conference in 2268, showed the Andorian government that the alliance may be more fragile than anyone believed. A plan for a precautionary military upgrade slowly passed through the Andorian heirarchy.

By 2270, plans were laid for the first cruiser built strictly for the Imperial Guard in decades. The Maar Zhiin class utilized the same ship design philosophy the Andorian navy has been known for decades, most notably the twin impulse drives mounted on outboard wings.

This military buildup caused quite a stir amongst other Federation members as to what all this actually meant. To placate any worry of possible military threat against other members, the Andorian government agreed to joint nonmilitary operations with Star Fleet, and reserve fleet status for their ships if hostilities necessitate. This agreement placated most federation members, although rumors have spread that some plan their own military modernization programs, specifically the Tellarites.



NUUZ ZIIK CLASS VI DESTROYER

Construction Data:

<i>Model Numbers —</i>	Mk I	Mk II	Mk III	Mk IV	Mk V
<i>Ship Class —</i>	VI	VI	VI	VI	VI
<i>Date Entering Service —</i>	2244	2256	2260	2272	2281
<i>Number Constructed —</i>	78	28	48	27	5

Hull Data:

<i>Superstructure Points —</i>	20	20	20	20	20
<i>Damage Chart —</i>	C	C	C	C	C
<i>Size:</i>					
Length —	171.5 m	171.5 m	171.5 m	171.5 m	171.5 m
Width —	71.1 m	71.1 m	71.1 m	71.1 m	71.1 m
Height —	59.5 m	59.5 m	59.5 m	59.5 m	59.5 m
Weight —	63,647 mt	64,285 mt	65,085 mt	65,979 mt	65,419 mt

Cargo:

Cargo Units —	149 SCU	149 SCU	149 SCU	149 SCU	149 SCU
Cargo Capacity —	7,450 mt	7,450 mt	7,450 mt	7,450 mt	7,450 mt
Landing Capacity —	None	None	None	None	None

Equipment Data:

<i>Control Computer Type —</i>	AMC-2	AMC-3	AMC-3	AMC-4	AMC-4
<i>Transporters:</i>					
standard 6-person —	2	2	2	2	2
emergency 18-person —	2	2	2	2	2
cargo —	1	1	1	1	1

Other Data:

<i>Crew —</i>	149	149	156	158	160
<i>Passengers —</i>	10	10	10	10	10
<i>Shuttlecraft —</i>	2	2	2	2	2

Engines And Power Data:

<i>Total Power Units Available —</i>	22	28	34	38	42
<i>Movement Point Ratio —</i>	2/1	2/1	2/1	2/1	2/1
<i>Warp Engine Type —</i>	AWB-1	AWB-1	AWB-2	AWB-2	AWB-2
Number —	2	2	2	2	2
Power Units Available —	8 ea.	8 ea.	11 ea.	11 ea.	11 ea.
Stress Chart —	H/K	H/K	H/K	H/K	H/K
Max Safe Cruising Speed —	Warp 6	Warp 6	Warp 7	Warp 7	Warp 7
Emergency Speed —	Warp 8	Warp 8	Warp 8	Warp 8	Warp 8
<i>Impulse Engine Type —</i>	AIB-1 (x2)	AIC-1 (x2)	AIC-1 (x2)	AID-1 (x2)	AID-2 (x2)
Power Units Available —	3 ea.	6 ea.	6 ea.	8 ea.	10 ea.

Weapons And Firing Data:

<i>Beam Weapon Type —</i>	AH-2	AH-3	AH-5	AH-5	AH-9
Number —	4	4	4	4	4
Firing Arcs —	2 f/p, 2 f/s	2 f/p, 2 f/s	2 f/p, 2 f/s	2 f/p, 2 f/s	2 f/p, 2 f/s
Firing Chart —	G	S	R	R	R
Maximum Power —	3	3	4	4	6
Damage Modifiers —					
+3	(1-4)	(1-6)	(-)	(-)	(-)
+2	(5-7)	(7-12)	(1-8)	(1-8)	(1-9)
+1	(8-10)	(13-16)	(9-16)	(9-16)	(10-16)
<i>Missile Weapon Type —</i>	AP-1	AP-2	AP-2	AP-5	AP-5
Number —	2	2	2	2	2
Firing Arcs —	1 f, 1 a	1 f, 1 a	1 f, 1 a	1 f, 1 a	1 f, 1 a
Firing Chart —	F	K	K	S	S
Power To Arm —	1	1	1	1	1
Damage —	5	10	10	15	15

Shield Data:

<i>Deflector Shield Type —</i>	ASB	ASF	ASF	ASD	ASD
Shield Point Ratio —	1/2	1/2	1/2	1/2	1/2
Maximum Shield Power —	10	13	13	15	15

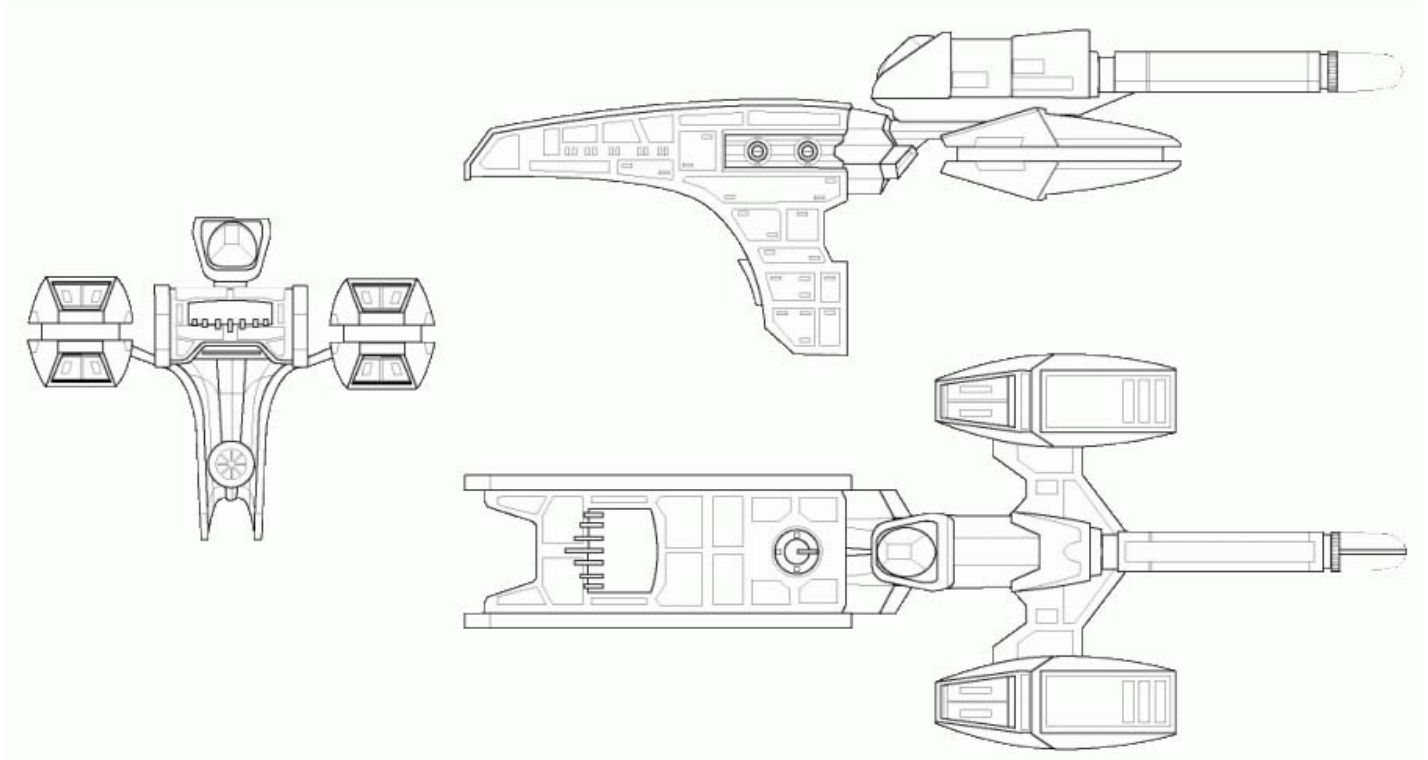
Combat Efficiency:

D —	73.6	86.6	94.6	104.6	109.6
WDF —	8	21.6	21.6	31.8	36.6

NUUZ ZIIK CLASS VI DESTROYER

Notes:

While no longer in service, the Nuuz Ziik was a popular and capable craft that served the Andorian Imperial Guard and later the Federation for a number of years. Of the 186 ships built, 20 Mk IIs, 30 Mk IIIs and 50 Mk Vs are in reserve fleets. 18 Mk Is, 5 Mk IIs, 4 Mk IIIs and 2 Mk IV have been destroyed. 1 each of the Mk I, Mk II and Mk III variant is listed as missing. 11 Mk Is, 2 Mk IIs, 3 MK IIIs, 2 Mk IV and 1 MK V have been scrapped. The Nuuz Ziik has proven to be a popular class with various individuals; 2 Mk Is, 10 Mk IIs, 15 Mk IIIs, 2 MK IV and 6 Mk V have been disarmed and sold to civilian concerns. Many have since been re-armed and now operate along the edge of Federation controlled space.



SELTRA CLASS IX LIGHT CRUISER

Construction Data:

<i>Model Numbers —</i>	Mk I	Mk II	Mk III	Mk IV	Mk V
<i>Ship Class —</i>	IX	IX	IX	IX	IX
<i>Date Entering Service —</i>	2256	2258	2272	2290	2336
<i>Number Constructed —</i>	16	39	28	11	Refit

Hull Data:

<i>Superstructure Points —</i>	22	25	32	34	36
<i>Damage Chart —</i>	C	C	C	C	C
<i>Size:</i>					
Length —	208.3 m	208.3 m	208.3 m	208.3 m	208.3 m
Width —	150.5 m	150.5 m	150.5 m	150.5 m	150.5 m
Height —	37.2 m	37.2 m	37.2 m	37.2 m	37.2 m
Weight —	134,329 mt	139,819 mt	135,521 mt	136,821 mt	138,922 mt
<i>Cargo:</i>					
Cargo Units —	316 SCU	316 SCU	316 SCU	316 SCU	316 SCU
Cargo Capacity —	15,800 mt	15,800 mt	15,800 mt	15,800 mt	15,800 mt
Landing Capacity —	None	None	None	None	None

Equipment Data:

<i>Control Computer Type —</i>	AMC-7	AMC-7	AMC-8	AMC-8	AMC-8
<i>Transporters:</i>					
standard 6-person —	2	2	2	2	2
emergency 18-person —	2	2	2	2	2
cargo —	2	2	2	2	2

Other Data:

<i>Crew —</i>	225	228	231	238	238
<i>Passengers —</i>	30	30	30	30	30
<i>Shuttlecraft —</i>	3	3	3	3	3

Engines And Power Data:

<i>Total Power Units Available —</i>	32	34	41	41	44
<i>Movement Point Ratio —</i>	2/1	2/1	2/1	2/1	2/1
<i>Warp Engine Type —</i>	AWC-1	AWC-1	AWF-1	AWF-1	AWF-1
Number —	2	2	2	2	2
Power Units Available —	12 ea.	12 ea.	13 ea.	13 ea.	13 ea.
Stress Chart —	G/H	G/H	G/H	G/H	G/H
Max Safe Cruising Speed —	Warp 8	Warp 8	Warp 8	Warp 8	Warp 8
Emergency Speed —	Warp 9	Warp 9	Warp 9	Warp 9	Warp 9
<i>Impulse Engine Type —</i>	AID-1	AID-2	AIC-2	AIC-2	AIF-2
Power Units Available —	8	10	15	15	18

Weapons And Firing Data:

<i>Beam Weapon Type —</i>	AH-5	AH-6	AH-7	AH-7	AH-11
Number —	4	4	4	4	4
Firing Arcs —	2 f/p, 2 f/s	2 f/p, 2 f/s	2 f/p, 2 f/s	2 f/p, 2 f/s	2 f/p, 2 f/s
Firing Chart —	R	M	Y	Y	W
Maximum Power —	4	7	5	5	6
Damage Modifiers —					
+3	(-)	(-)	(-)	(-)	(1-15)
+2	(1-8)	(1-10)	(1-12)	(1-12)	(16-18)
+1	(9-16)	(11-14)	(13-24)	(13-24)	(19-20)
<i>Beam Weapon Type —</i>	AH-3	AH-3	AH-6	AH-9	AH-9
Number —	6	6	6	6	6
Firing Arcs —	2 p, 2 s, 2 a	2 p, 2 s, 2 a	2 p, 2 s, 2 a	2 p, 2 s, 2 a	2 p, 2 s, 2 a
Firing Chart —	S	S	M	R	R
Maximum Power —	3	3	7	6	6
Damage Modifiers —					
+3	(1-6)	(1-6)	(-)	(-)	(-)
+2	(7-12)	(7-12)	(1-10)	(1-9)	(1-9)
+1	(13-16)	(13-16)	(11-14)	(10-16)	(10-16)
<i>Missile Weapon Type —</i>	AP-1	AP-2	AP-2	AP-5	AP-5
Number —	2	2	2	2	2
Firing Arcs —	1 f, 1 a	1 f, 1 a	1 f, 1 a	1 f, 1 a	1 f, 1 a
Firing Chart —	F	K	K	S	S
Power To Arm —	1	1	1	1	1
Damage —	5	10	10	15	15

Shield Data:

<i>Deflector Shield Type —</i>	ASD	ASD	ASH	ASH	ASK
Shield Point Ratio —	1/2	1/2	1/3	1/3	1/3
Maximum Shield Power —	15	15	18	18	20

Combat Efficiency:

D —	99.5	105.8	159.8	162.6	173
WDF —	35.4	45	56	68	72.4

SELTRA CLASS IX LIGHT CRUISER

Notes:

A total of 94 of these popular light cruisers have been fielded over the years. Currently, 28 Mk Vs are in active service. Many are scheduled for retirement although no official date for the removal of the class has been stated. 10 each of the Mk III and MK V are in reserve fleets. 5 Mk IIs, 3 Mk IIIs, 2 Mk IVs and 2 Mk V have been destroyed. 1 Mk II was captured by Klingon forces outside Federation space. 1 Mk II and 1 MK IV are listed as missing. 1 Mk I, 1 Mk II, 2 Mk IIIs, 4 Mk IVs and 3 Mk Vs have been scrapped. 5 each of the Mk II and Mk III have been disarmed and sold.

The Seltra is named for the famous Commandant of the Laikan Military Academy whos family single handedly carved the cavern where the Academy now stands.

